

Scanning to Laptop (WideTEK36CL) – ScanWizard Touch Guide

For advanced scanner settings - such as DPI, file format, and scan mode - or operation without a USB drive, you can manage the process seamlessly using the intuitive scanning software, **ScanWizard Touch**, on the connected laptop, as demonstrated below.

Getting Started

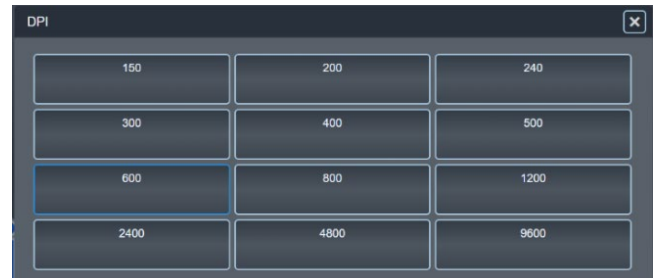
- Open the **ScanWizard Touch** shortcut on the desktop. By default, this will launch in Google Chrome.
- To start scanning, press the “**Scan Now**” button  in the **ScanWizard Touch** interface on the laptop.

Adjusting Scanning Settings

- **DPI (Resolution):**

You can select a DPI value ranging from 150 to 1200. The scanner’s maximum optical resolution is **1200 × 1200 dpi**.

Higher resolutions (2400 to 9600 dpi) are interpolated, meaning they are achieved through software algorithms that add extra pixels based on existing data.



- **Color Mode:**

Choose from multiple color modes:

24-bit Color / 8-bit Color / Grayscale / Binary / Enhanced Halftone

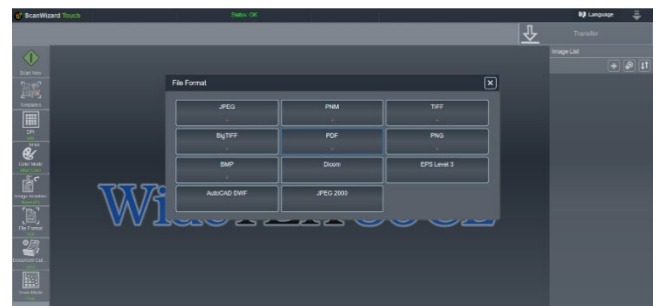
- **Image Rotation:**

Adjust the orientation of scanned images.



- **File Format:**

In addition to the default formats (JPG, PDF, and TIFF), the scanner supports a variety of file formats. Including options such as BMP, AutoCAD DWF, and PNG etc.



- **Document Output:**

After scanning, you can choose how to handle the document: eject it to the tray, rewind it back onto the document transport platform, or hold it within the scanner.

Scanning Speed and Quality

- The standard scanning speed is 10 inches/second (15 m/min) in color at 200 dpi, and 15 inches/second (22.9 m/min) in black and white at 200 dpi.
- For higher image quality, select the “**High Quality**” option, it will reduce the scanning speed to ensure better results.

Saving and Exporting Files

- **Saving to Laptop:**

To save scanned images to the laptop, click the “**Transfer**” button in the top right corner of the interface and select “**Save to Laptop.**” The files will be exported to the “**Scanned**” folder on the desktop.

- **Multipage Documents:**

For multipage documents, ensure you choose a file format that supports multipage export, such as **PDF**.

