

PolyU Lib! BLOG

[用戶登入 | 新用戶? 立即申請]

BLOG 主頁 | 服務中心

搜尋



Library survival skills for new students 新生須知



Anyone knows how to remotely access library resources and set up Library PIN to access online library services?

我想在家使用圖書館電子資源及圖書館的線上服務，應該怎樣做呢？

回主頁

PAO YUE-KONG
LIBRARY



加入BLOG友

訂閱BLOG



Just a few easy steps, you can [access Library e-resources remotely](#) from home via the EZproxy Server. Just connect to your ISP (Internet Service Provider) as usual and input your valid PolyU NetID and NetPassword for authentication.

想遙距使用圖書館電子資源，只需簡單幾步。像平時一樣使用你的互聯網服務供應商上網，在登入網頁時輸入有效的理大NetID和密碼作驗證，就可透過EZproxy伺服器在家中遙距使用圖書館的電子資源。

Setting up your Library PIN to access online library services 設定你的圖書館密碼以便使用圖書館的線上服務

You need to set up a PIN with the Library System before using the following online library services:
View your Circulation Record, Book Renewal, Book Request, Interlibrary Loan Request and Ask a Librarian.

你必須先於圖書館系統設定你的密碼（PIN），方可使用以下的網上圖書館服務：
檢視個人借還書記錄、續借書籍、預約書籍、館際互借申請及網上參考諮詢服務。



Want to know more about the Library? 想知道圖書館多一點嗎?



Join the Library Orientation (details and timetable available on Library Homepage) or watch the library video on YouTube <www.lib.polyu.edu.hk/about/video/lib_eng.htm>

你可以參加圖書館的迎新講座（詳情可於圖書館網頁找到）或瀏覽YouTube的圖書館影片介紹。

CONTENTS 目錄

1 FEATURE STORY 專題故事

4 FEATURED COLLECTION 特色館藏

7 USER EDUCATION 讀者教育

2 HIGHLIGHTS 重點報導

5 RESEARCH CORNER 科研園地

8 PREFERRED LIBRARY SCENARIO 圖書館首選情境規劃

3 NEW RESOURCES 新增資源

6 PROFILE 館員透視

PolyU President Visits The Library

新校長參觀圖書館

On 17 June 2009, Professor Timothy Tong, the President of PolyU, paid a familiarization visit to the Library.
新任理工大學校長唐偉章教授於09年6月17日到訪大學圖書館。



The President tours around the Library
參觀閱覽室



University Librarian showcases the progresses of the Preferred Library Scenario
給校長介紹圖書館的“首選情境規劃”



President chats with Library staff
校長與員工愉快交談



A briefing for President
圖書館為校長作了一個簡介

ebrary

<<http://site.ebrary.com/lib/polyu/search.action>>



The Library has purchased 4,800 e-book titles from ebrary. ebrary is an e-book aggregator covering academic disciplines including business and economics, computers and information technology, education, engineering, humanities and social sciences, health and biomedical sciences, life and physical sciences, and social and behavioral sciences. Users can print up to 10 pages each time from an ebook.

圖書館訂購了4,800本ebrary電子書。ebrary是提供多學科電子書的平台，包括商業經濟、電腦技術、教育、工程、人文社會、醫學和護理、生命自然科學及行為科學等。讀者每次最多可列印10頁。

MyiLibrary

<<http://lib.mylibrary.com/home.asp>>

MyiLibrary is an e-content platform for public, academic and professional libraries around the world. Their contents embrace the world's leading commercial publishers, including Taylor & Francis, McGraw-Hill, Wiley, Oxford University Press, Cambridge University Press, Springer and Elsevier. The Library has purchased 600 e-book titles from MyiLibrary. Users can print and download up to 10 pages each time from an ebook.

MyiLibrary為公共、學術與專業圖書館提供電子資源的平台。讀者可透過該平台獲取世界知名出版社如牛津大學出版社、劍橋大學出版社出版的名類電子書。本館共訂購600多本電子書。讀者每次最多可下載與列印10頁。



Century of Cinema 百年光影情懷(亞洲篇)



For celebrating the centennial anniversary of motion pictures, this series contains 4 documentaries by 4 Asian directors addressing their personal essay on cinema. 為慶祝電影誕生一百週年，此系列包含了四位亞洲導演所拍攝的百年電影紀錄片，表達個人對電影的看法與反思。

- Nagisa Oshima's 100 years of Japanese Cinema
百年日本映畫 (日本導演: 大島渚) [PN1993.5.J3 N33 VCD]
- A Personal Essay on Cinema in Korea by Jang Sun-Woo: The Cinema on the Road
電影在路途上 (韓國導演: 張善宇) [PN1993.5.K6 P47 VCD]
- Mrinal Sen on Century of Cinema India
印度電影 (印度導演: Mrinal Sen) [PN1993.5.I8 M74 VCD]
- Yang + Yin: Gender in Chinese Cinema: a film to celebrate 100 years of Cinema
男生+女生: 中國電影一百周年 (香港導演: 關錦鵬) [PN1993.5.C4 Y36 VCD]

Faculty Seminar Series

哈佛商學院光碟系列

(by Harvard Business Publishing)



1.



2.



3.



4.

This series features engaging video lectures from Harvard Business School and Stanford Graduate School of Business. The lectures, captured from executive education programs, offer groundbreaking ideas, insightful research, and practical advice on management issues. You can “drop in” to the classroom at your convenience. Each dynamic lecture is presented in streaming video and audio, align with synchronized slides and links to a companion web site with list of additional resources recommended by the faculty. The series includes:

1. Winners (don't) Take All / Margaret A. Neale [HD58.6 .W566 CDM]
2. What Really Matters / Nitin Nohria [HD31 .W425 CDM]
3. The Danger of Silencing Conflict at Work / Leslie A. Perlow [HD42 .D363 CDM]
4. Just Enough : Defining Lifelong Success / Howard Stevenson [HF5386 .J877 CDM]

本館收集了哈佛商學院與史丹福商學院教授的課程系列。該光碟系列錄製了兩間學院著名教授的課程，為你提供創新思維、靈感及別具見解的研究資料和忠告。你可以在教室裏聆聽教授的演說，並同步觀看幻燈片。此外，每堂課程也可連接到教授推薦的網站。讀者可到圖書館三樓視聽資料部借閱本系列光碟。

ARTstor Digital Library

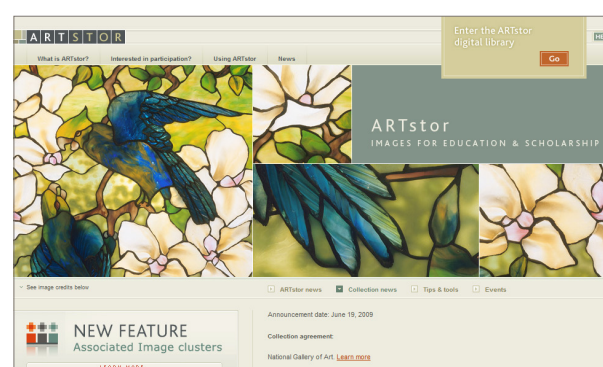
ARTstor 數字圖書館

<<http://www.artstor.org>>

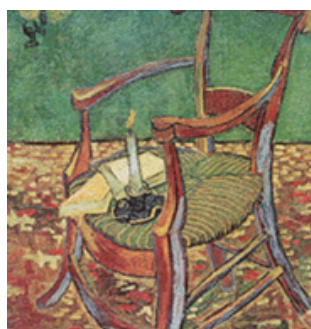
ARTstor is a digital library of nearly one million images with a set of advance tools to browse, search and sort contents by specific criteria. Users can also print, manage and save citations for research and teaching purposes easily. It serves users in disciplines as diverse as art and architecture, American Studies, Anthropology, Asian Studies, Classical Studies, Literary Studies, Medieval Studies, Music, Religious Studies, and Renaissance Studies.

In ARTstor users can:

- browse contents by collection, classification or geography
- search content by keyword or advanced search terms
- sort search results by date, creator, or title
- view images and image data, and zoom in on and pan image for greater detail
- print and save images and related data to other hardware (e.g. CD, memory stick, hard drive)
- upload personal images and sound files to the ARTstor platform
- save citations for images, and email or print these, as well as export them directly into EndNote, ProCite, RefWorks, Reference Manager, or a text file.



Karel Allard; Map of the World c1710.



Vincent Van Gogh; Gauguin's Armchair, Candle, and Books.

ARTstor收錄了近一百萬影像檔案。為方便讀者研究及教學，該數據庫擁有瀏覽、檢索、排序、列印、儲存與圖像出處標引等功能。涵蓋藝術、建築學、美洲學、人類學、亞洲學、古典研究、文學研究、中世紀研究、音樂、宗教研究和文藝復興研究等。

PolyU Institutional Repository

理大典藏資料

<<http://repository.lib.polyu.edu.hk>>

“The PolyU Institutional Repository is an initiative in the right direction. It will offer an effective platform for our academics to deposit, preserve and publicize their research and scholarly output.”

-- Prof. Timothy W. Tong

Deposit now PolyU researchers!!! 存儲研究成果，立即行動!!!

Please call (852) 3400-3196 or email <lbir@polyu.edu.hk> IR staff to deposit materials, or for any enquiries and arranging a briefing session on the **PolyU IR**.

Research Database News

資料庫簡訊

Database New Releases 資料庫新發佈

Journal Citation Reports

2008 JCR data available now. New metrics and features in the JCR Web include:

- 5-Year Journal Impact Factor
- Eigenfactor Metrics, comprising the *Eigenfactor* Score and *Article Influence* Score, use JCR citation data to assess the influence of a journal in relation to other journals. These metrics, based on five years of citation activity, consider not just the count of citations but the structure of the citation network. *Eigenfactor* Metrics are available for JCR years 2007 and later. See <http://admin-apps.isiknowledge.com/JCR/static_html/notices/notices.htm#eigen_score> for more information.

Why Eigenfactor?

See <<http://eigenfactor.org/whyEigenfactor.htm>>.

2008 JCR Science Edition

Journal Summary List

Journals from: **subject categories ENGINEERING, CIVIL** [VIEW CATEGORY SUMMARY LIST](#) [Journal Title Changes](#)

Sorted by: **Impact Factor** [SORT AGAIN](#)

Journals 1 - 20 (of 91) [MARK ALL](#) [UPDATE MARKED LIST](#) [Ranking is based on your journal and sort selections.](#)

Mark	Rank	Abbreviated Journal Title (linked to journal information)	ISSN	Total Cites	Impact Factor	5-Year Impact Factor	Immediacy Index	Articles	Cited Half-life	Eigenfactor™ Metrics	Article Influence™ Score
	1	HAZARD MATER	0304-3894	11402	2.975	3.212	0.393	1177	3.0	0.03791	0.661

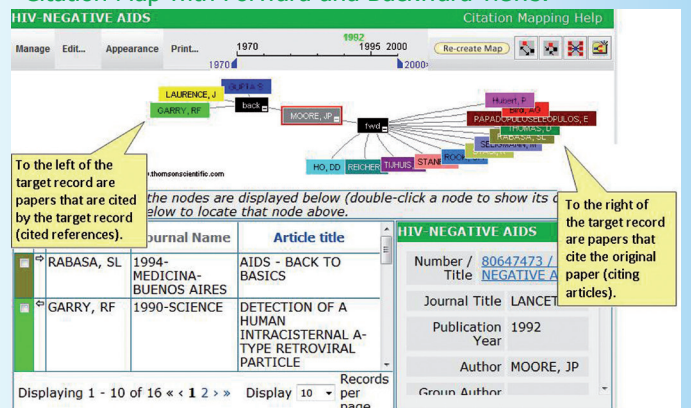
Web of Science

- **ResearcherID**, available via ResearcherID.com, is an author profile service introduced by Thomson Reuters. Each participating author is assigned a unique identifier that helps to solve the problem of author misidentification. Registered researchers can create a profile, build an online publication, generate citation metrics, etc. Go to <<http://isiwebofknowledge.com/researcherid/>> to learn more.
- **Citation Map** is a graphical representation that shows the citation relationships (cited references and citing articles) between a paper and other papers using various visualization tools and techniques. You can use it to analyze which researchers are citing your papers.

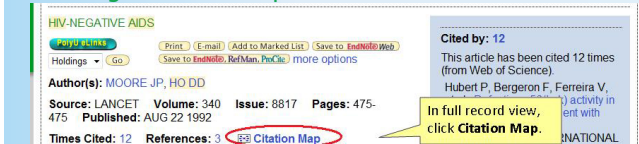
Researchers at PolyU can register via Web of Science:



Citation Map with Forward and Backward views:



Creating a Citation Map:



Change of Database Title 資料庫新名稱

- **Elsevier World Textiles** is the new name for **World Textiles** <<http://www.lib.polyu.edu.hk/node/849>>.

Research Series Library Workshop

研究系列圖書館工作坊

Want to brush up your research skills?

Join our Research Series Workshops in October (e.g. RefWorks Advanced Workshop) via:

<<http://www.lib.polyu.edu.hk/tutorial/main/index.html>>

Collection Development & You

館藏發展與你



In this information explosion era, the Library is facing critical challenges as well as change opportunities. The responsibility of developing and maintaining the Library collection no longer lies in the hand of a small group of staff but is shared by all professional staff of the Library. They need to work together and strategically select, retain and withdraw items while balancing between academic needs and the limited Library budget.

To this end, the Library has developed a new 3-tiered Collection Development Model to further enhance the development and maintenance of the Library collection.

在這資訊泛濫年代，圖書館正面對嚴峻挑戰及轉變機遇。發展和維持圖書館館藏不再是個別圖書館人員的職責，而是全館專業人員共同努力。有策略地進行挑選、保留及剔除等工作，同時亦要為配合學術需要及有限資源之間取得平衡。

因此，圖書館實行了一個具三層架構的館藏發展模式，進一步發展和維護館藏。

To find out your Subject Specialist:

找出你的學科專員：

<<http://www.lib.polyu.edu.hk/cd/dir.html>>

For more details:

更多有關資料：

<<http://www.lib.polyu.edu.hk/cd/index.html>>

1 Collection Development Steering Committee

館藏發展推動委員會

Chaired by the University Librarian, the Committee is responsible for the overall collection development of the Library.

由圖書館館長帶領，負責推動館藏發展及認可發展策略。

2 Collection Development Working Team

館藏發展工作組

Chaired by the Associate Librarian (Academic Liaison), the Working Team meets monthly to discuss collection development and management issues, to review/enhance policies and procedures, to recommend to the Steering Committee and implement appropriate collection development programmes and evaluation projects.

由副館長(學術聯繫)帶領，工作組每月討論館藏發展及管理事宜、訂立政策及程序、向館藏發展推動委員會建議並推行發展及評估計劃。

3 Selection/Liaison Teams

挑選/聯繫小組

With the Faculty/Schools Librarian as the team leader, each of the 7 teams is supported by one or more professional librarians as Subject Specialists to assist in the selection and withdrawal of print and e-resources.

小組以大學院系單位細分為七組，分別由各學院圖書館主任帶領，並由多位相關學科之專業館員協助挑選及註銷其印刷及電子資料。

Library Orientation 圖書館迎新活動

Welcome to the Library! Remember to join the orientation session arranged by your department/school. Please refer to their notification or [contact us](mailto:contact@lib.polyu.edu.hk) if you need special arrangement. Or visit our [Virtual Orientation](http://www.lib.polyu.edu.hk/intro/eng/00-welcome.htm) <<http://www.lib.polyu.edu.hk/intro/eng/00-welcome.htm>> prepared for you!

為你未來幾年學習作好準備，記得參加學系為你安排的圖書館迎新講座。如需特別安排，亦可以聯絡我們，或者瀏覽我們的網上虛擬介紹<<http://www.lib.polyu.edu.hk/intro/eng/00-welcome.htm>>！



Topical Workshops 專題工作坊



The most popular topical workshops will be available starting from October! A wide range of topics will equip you with the essential skills to find relevant materials for your study and research. For example, in the workshop [Some Advanced Library Catalogue Searching and SuperCat, Your "Next Generation" Catalogue](#), you will learn advanced search techniques and effective strategies in using the Library Catalogue such as using advanced search features, exporting records, and managing email alert function.

Watch out for our workshop announcement in mid-September or visit <<http://www.lib.polyu.edu.hk/tutorial/main/index.html>> (Library homepage ⇨ Workshops and online tutorials) for more details.

圖書館將會在十月份開始舉辦一連串的專題工作坊。想學習進階搜尋技巧，讓你可以更有效利用圖書館資源學習和研究嗎？我們的[Some Advanced Library Catalogue Searching and SuperCat, Your "Next Generation" Catalogue](#)工作坊會指導你使用圖書館目錄的進階搜尋技巧及策略。

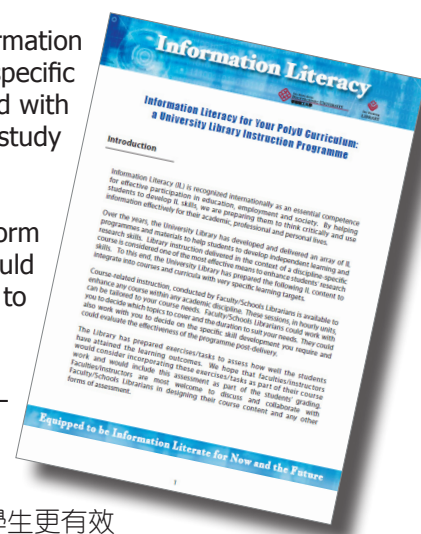
請留意我們在九月中發出的電郵，或瀏覽<<http://www.lib.polyu.edu.hk/tutorial/main/index.html>> (Library homepage ⇨ Workshops and online tutorials) 獲取最新消息。

Integrating Information Literacy into Curricula 把資訊素養訓練融入課程

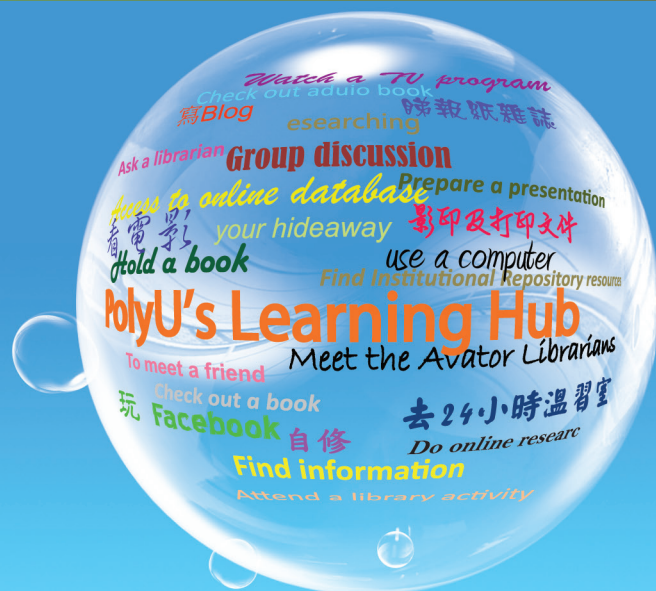
Over the years, the Library has worked with many teaching staff to deliver Information Literacy (IL) skills workshops for their students. The outcome of these discipline-specific courses is eminent and having students to engage in the learning process integrated with IL content is considered as one of the most effective means to enhance students' study and research skills.

The Library has prepared a core content of Information Literacy materials in the form of hourly units for integrating into courses with ease. Faculty/Schools Librarians could deliver the classes in collaboration with faculty members and would be pleased to discuss further on any specific needs of programmes and the topics to cover, etc.

Teaching colleagues from different departments/schools have already integrated IL components into their courses. If you are interested, please contact your [Faculty/Schools Librarian](#).



我們一直熱衷於與導師合作，為學生舉辦資訊素養工作坊。工作坊效果顯著，能讓學生更有效掌握學習及科研技巧。今年我們更特別撰寫了資訊素養核心課程，方便導師們把內容融入學科課程內。學院圖書館主任會與導師們合作及跟進，令課程內容更切合學科需要；而個別學系已在課程內加入與學科相關的資訊素養工作坊。導師們如有興趣在課程內加入相關訓練，歡迎與各學院圖書館主任聯絡。



Towards Achieving the Preferred Library Scenario Your library in this academic year...

你的圖書館在新學年.....

Steering towards our goal as the "Learning Hub" in 2011, this academic year, the Library will be devoted to:

- active outreach to library users
- active engagement with faculty staff
- co-operating with JULAC for collection development
- providing continuous support to researchers
- integrating Online Information Literacy Program into curricula
- expanding the PolyU Institutional Repository
- open access advocacy
- promoting and enhancing e-learning resources
- preparing for 3-3-4 students in 2012
- applying Web 2.0 technology
- upgrading Library equipment

為達到於2011年成為「大學學習中心」的目標，我們在今學年將致力於：

- 繼續主動與教職員緊密聯繫，使圖書館資源更緊貼教研要求
- 與大學圖書館長聯席會緊密合作，研究館藏發展
- 支持大學科研發展，為大學科研人員提供相關參考資料及諮詢服務
- 把網上資訊素養訓練融入課程
- 拓展理大典藏資料庫
- 推廣「開放取閱」
- 推廣及加強網上學習資源
- 為2012年 3-3-4 新學制作準備
- 應用Web 2.0
- 提升館內設備