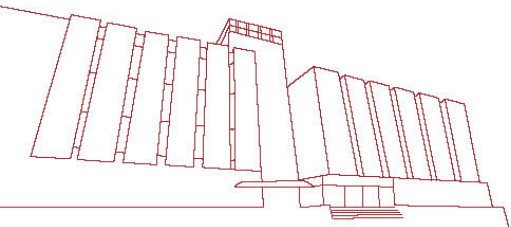


LIBRARY WORKSHOPS

Sharpen research techniques • Locate • Manage • Evaluate information

Preview Slides

(Version as of Sem 2, 2018/19)



LS074

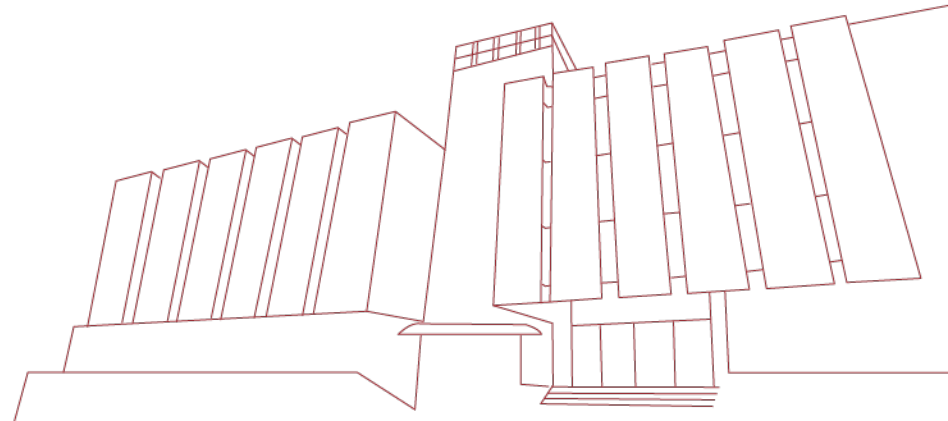
Publishing 101

- Basics of Academic Journal Publishing

Aster Zhao

E aster.zhao@polyu.edu.hk

T 2766 6859



Agenda

- Process of journal publishing
- Choosing the right journal
- Submitting your manuscript – Things to be aware
- Sharing your work online

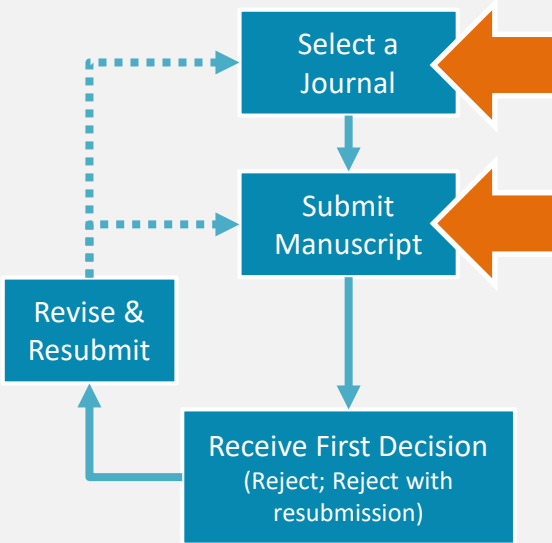
Learning Outcomes

After the workshop, you will be able to

- **Understand the process of journal publishing**
- **Use library and online tools to identify quality and relevant journals in your research area**
- **Locate the journal requirement and prepare for manuscript submission**

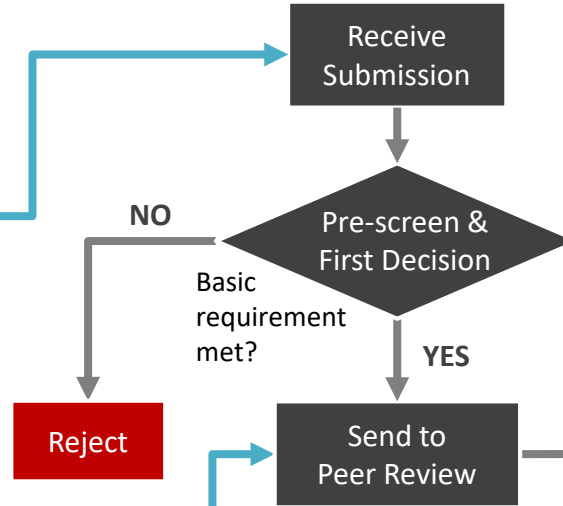
Authors

Researchers, Practitioners, Students



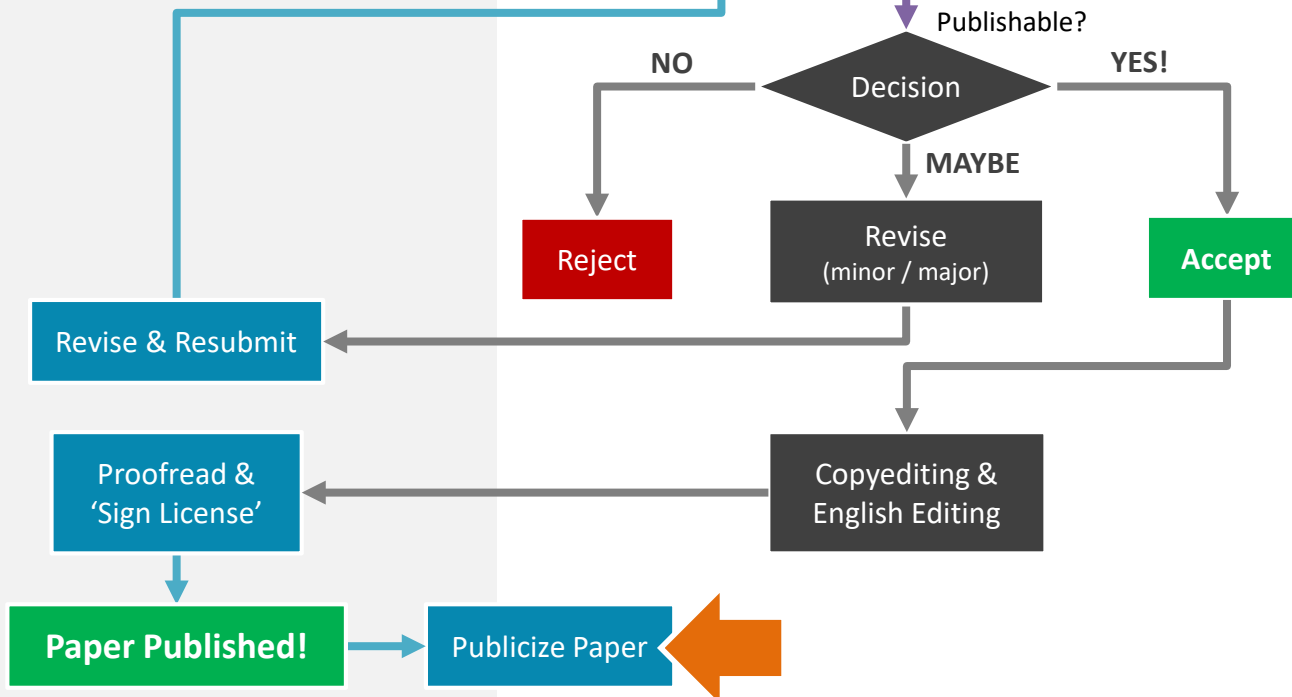
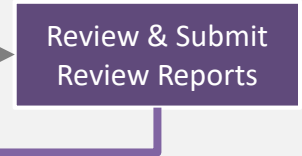
Editors / Publishers

(Senior) Researchers, Publisher employees



Reviewers

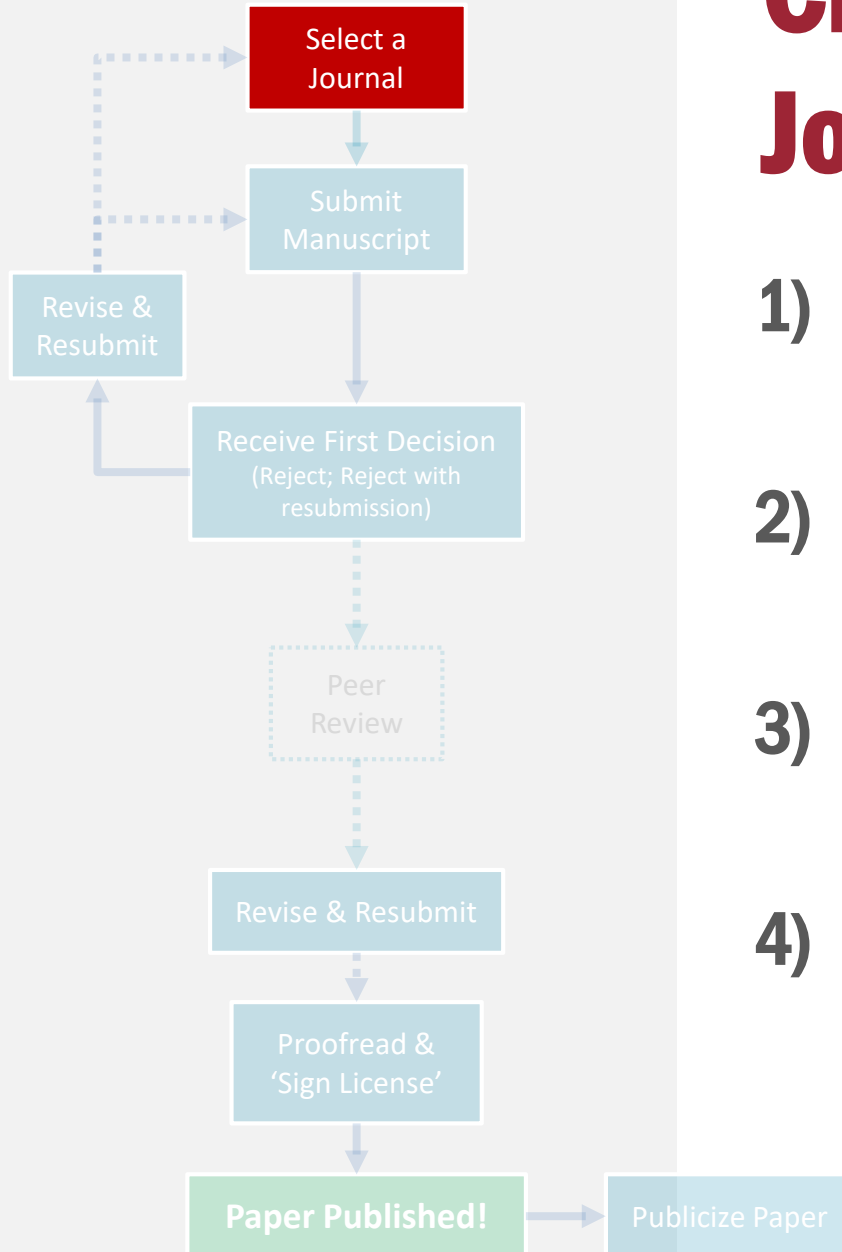
Researchers



**Process
of Journal
Publishing**

Authors

Researchers, Practitioners, Students



Choosing the Right Journal

- 1) Check the journals your supervisor has published in
- 2) Identify journals from the reference list of your manuscript
- 3) Additional tools to help you pick journals
- 4) General criteria for journal selection

1) Check the journals your supervisor has published in

- Read from their publication list
- Check with your supervisor, colleagues, and your department to learn: e.g. “Grade A journals” or “A+ journals”, and the “preference” of editors

Top 10 Publishers PolyU authors published with

and their guidelines for authors

1. [Elsevier](#)
2. [Springer Nature](#)
3. [IEEE](#)
4. [Taylor & Francis](#)
5. [Wiley](#)
6. [SAGE](#)
7. [MDPI](#)
8. [Royal Society of Chemistry \(RSC\)](#)
9. [American Chemical Society \(ACS\)](#)
10. [Emerald](#)

* Data from Scopus,
timespan = 2014-2019

LIBRARY WORKSHOPS

Sharpen research techniques • Locate • Manage • Evaluate information

This is the last page of the preview materials.

The Library will launch a series of workshops on various topics in the coming semester. Staff and students are welcome to join. Please check the latest schedule on Library Workshops page: <https://www.lib.polyu.edu.hk/workshops/>.

