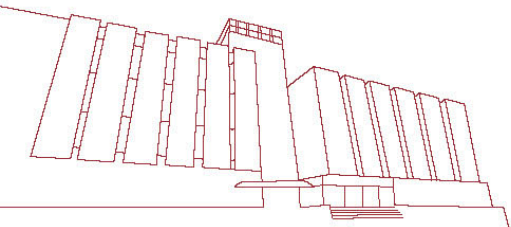


# LIBRARY WORKSHOPS

Sharpen research techniques • Locate • Manage • Evaluate information

## Preview Slides

(Version as of Sem 1, 2018/19)






# LS072 LIBRARY RESEARCH FOR FRESHMEN (UNDERGRADUATES)

PAO YUE-KONG LIBRARY  
POLYU






This workshop covers:

- an introduction to the research process
  - distinguishing popular magazines and scholarly journals
  - finding resources (e.g. books, media & articles) in or beyond the Library
  - evaluating and citing sources [also called referencing]
- 


# The research process – strategies for undergraduate students

1. Identify a research topic  
“Focusing the Scope of a Topic”
2. **Find information**
3. Evaluate the information found, and  
decide if it can be used
4. Organize & use the information ethically  
with proper citations

Repeat  
steps as  
necessary



# Popular magazines vs. scholarly / peer-reviewed journals

- Published at **regular intervals**, for example quarterly, monthly, weekly
  - Provide **more up-to-date** information than books
  - For your assignments and projects, you may find [scholarly journals](#) more useful as they are often a **reliable** source and usually seen as more authoritative.
- 

## Conference proceedings

- Conference proceedings depict the leading edge of research — revealing emerging trends and new ideas before they appear in journals.
- Conference proceedings papers are **often more up to date than journal articles.**

e.g.

CONFERENCE PROCEEDING / multiple sources exist. see all

**The strategy of landscape first for urban renewal in contemporary China**

Zhang, Fan ; Qiu, Bing

2011 5th International Association for China Planning Conference,  
June 2011, pp.1-6



## Reference materials

- Reference materials include dictionaries, encyclopedias, directories, bibliographies, indexes or the like.
- They are **not** items that you would usually want to read from cover to cover. These materials allow you to locate required information **fairly quickly, read and take notes.**
- They provide **a good starting point** for larger research projects by providing **summaries** and **overviews of broad topics**, and **references** to other useful sources.





## Databases

- Database is a large collection of information organized especially for efficient search and retrieval.
- Databases allow you to search a large number of journals at the same time.

e.g. [ABI/INFORM \(1971+\) via ProQuest](#)

How many journals are there in this database?

- Full-text vs. Indexes/Abstracts Databases
  - The complete text of each referenced document is available for online viewing, printing, or downloading
  - Each document contains only summary, full-text not available



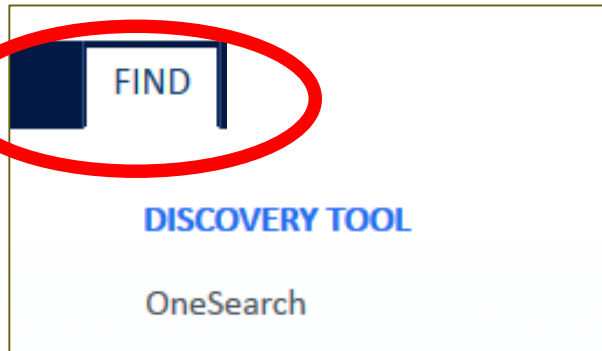


## 2. Find Information

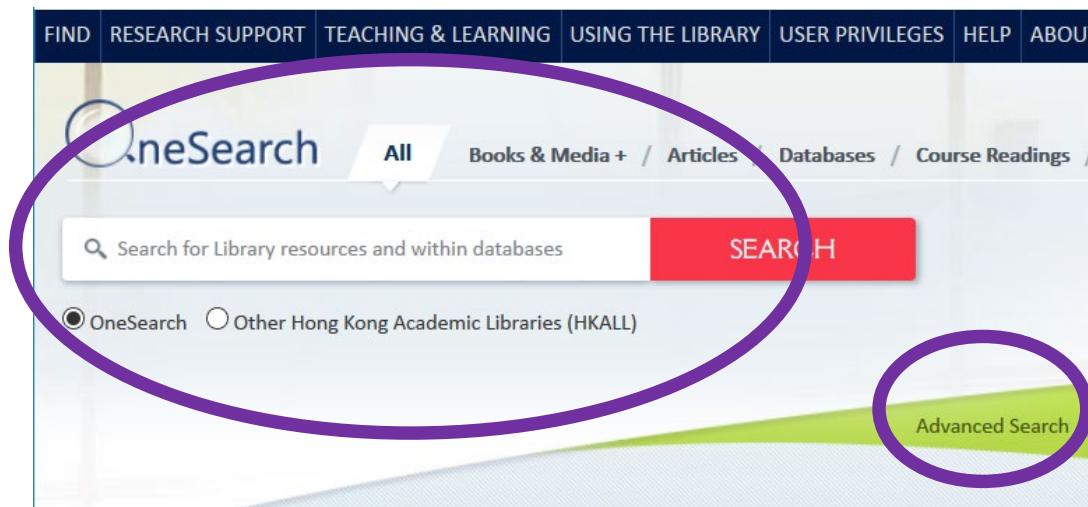
### What is OneSearch?

**OneSearch provides a one-stop solution for the discovery and delivery of local and remote resources, such as books, journal articles and digital objects, to support your learning and research.**

EITHER



OR



# HKALL Request

For detail, please visit –

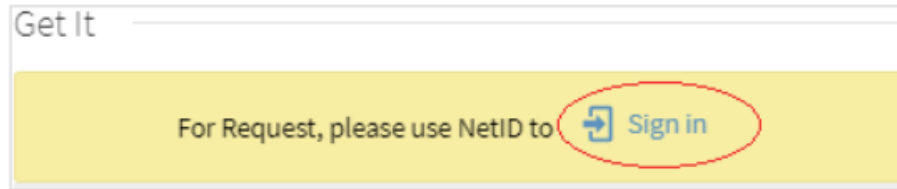
<https://www.lib.polyu.edu.hk/services/borrowing/hkall>

## Procedures

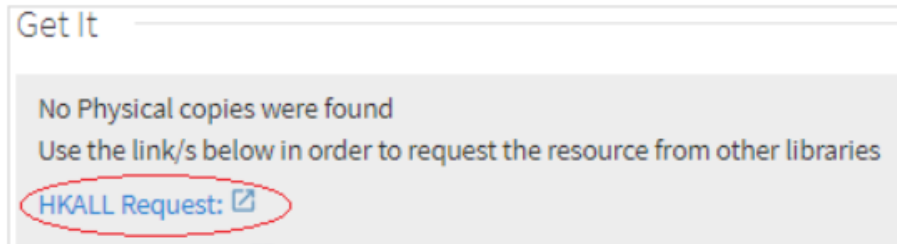
PRINTED BOOKS ONLY

You may request books which the PolyU Library does not possess or all its copies are out, but have the status "Available" in other libraries.

- Search [HKALL](#) and select the title.
- If copies with the status "Available" are found, click "**SIGN IN**" on the top right corner of the screen or under "Get It"



- Follow the on-screen instruction to sign in your library account.
- Click "**HKALL Request**" under "Get It".



- Click "**REQUEST**" to confirm.
- Wait for email notification.

# Interlibrary loans



ARTICLE

## The law of contract in a Hong Kong setting

Rhodes, Peter F.

University of British Columbia Law Review, Spring, 1981,  
Vol.15(2), p.431-445[Peer Reviewed Journal]

[No full-text](#) >

TOP

SEND TO

Send to



CITATION



PRINT



PERMALINK



E-MAIL



ENDNOTE



BLACKBOARD

Get It

No Physical copies were found in PolyU Library

Use the link/s below in order to request the resource from other libraries



[Inter-library loan](#) >


[Remote Store request](#) >

Having problems? Please [contact us](#)

Undergraduate students  
You may request **journal articles** from local or overseas libraries if they are not held at the PolyU Library. All requests must be endorsed by the lecturers.  
Free Quota per academic year - 30



## 3. Evaluate the information you found

- ⦿ As information users, it is important for us evaluate the information we found, and decide if we can use it.
  - ⦿ It has become a challenge for all of us in this information age. However, there are some basic criteria we can use to evaluate information from any sources.
- 

# LIBRARY WORKSHOPS

Sharpen research techniques • Locate • Manage • Evaluate information

This is the last page of the preview materials.

The Library will launch a series of workshops on various topics in the coming semester. Staff and students are welcome to join. Please check the latest schedule on Library Workshops page: <https://www.lib.polyu.edu.hk/workshops/>.

