

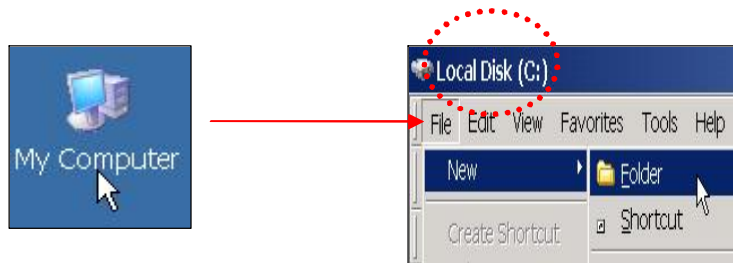


What resources are available for remote access ?

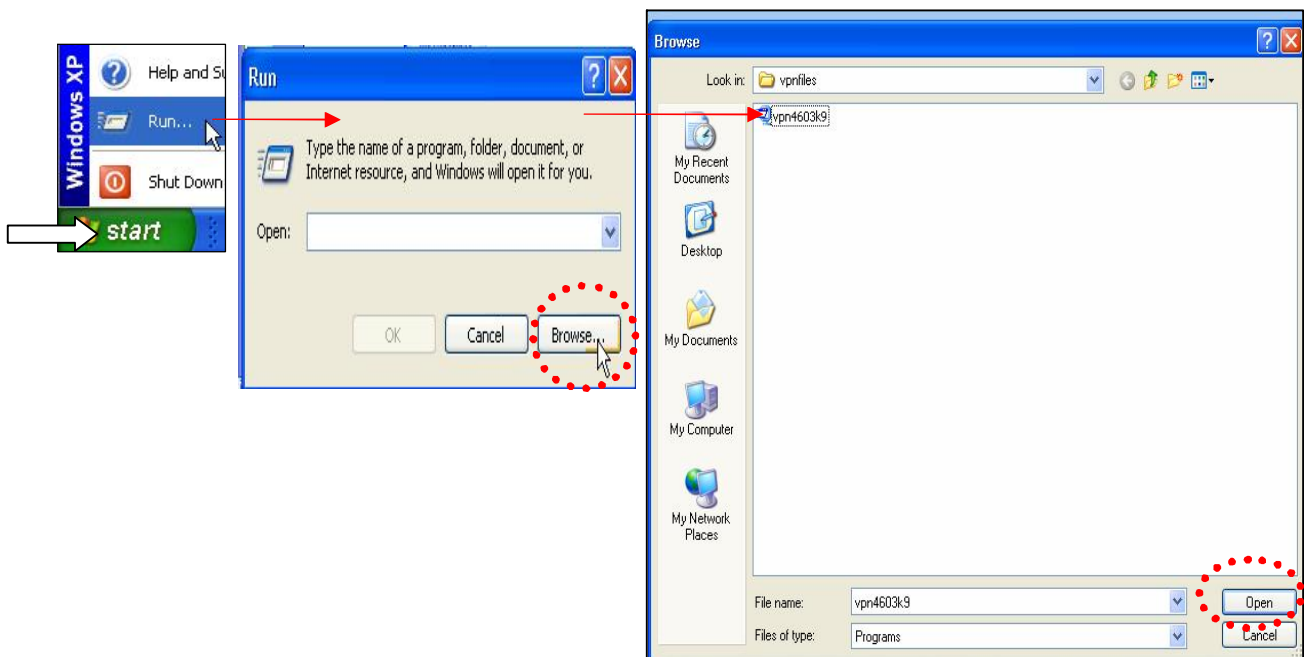
- The Library Homepage and the Library Catalogue are **freely** available to everyone. Please visit us at <http://www.lib.polyu.edu.hk>
- Library **electronic resources** including **databases**, **e-journals**, or **e-books** etc are **restricted** to PolyU staff and students only. To access these resources, you must either use the **VPN Services**, or the **Remote Dial-in Services** via the University modem pool.

How to use the VPN Services ?

- Create a **new folder** on your PC, e.g.: `c:\vpnfiles`



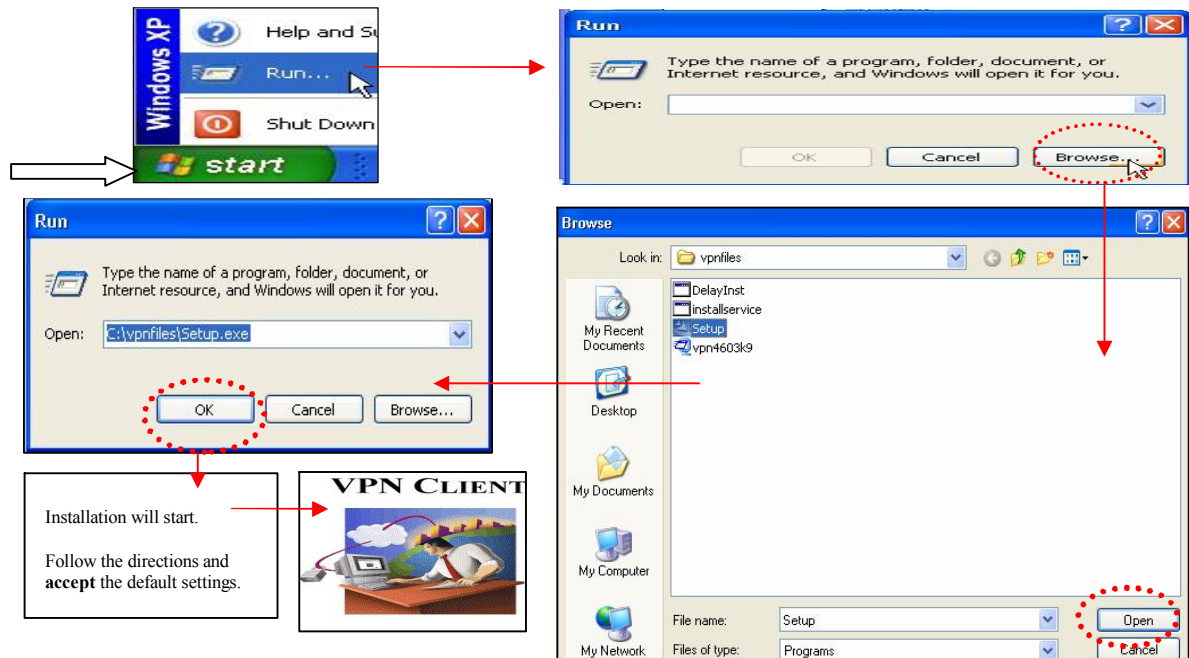
- Go to: http://www.polyu.edu.hk/its/services_facilities/polyuvpn/vpnquick.htm
- Download the self-extractor file **vpn4603k9.exe** for Windows XP, or **vpn50340k9.exe** (or the latest version) for Windows Vista into the new folder created.
- On your PC, click **START** and then **RUN**. Click **BROWSE** and look for the downloaded file. Select it, then click **OPEN**, and **OK**.



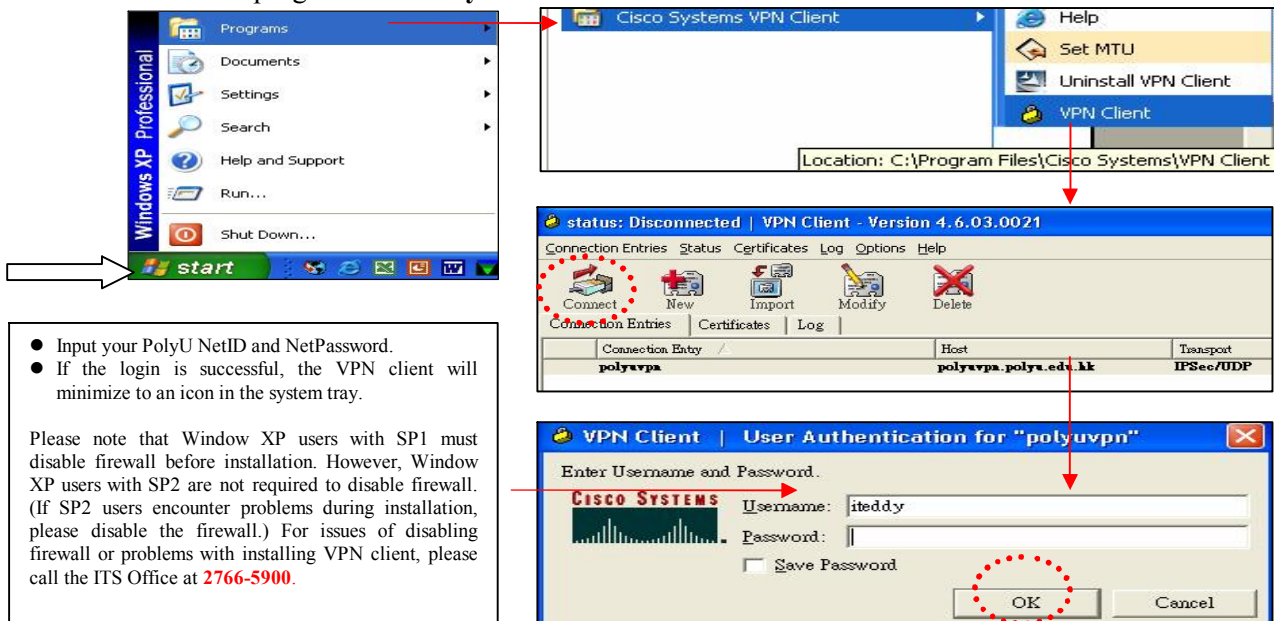
- When the WinZip window pops up, click **BROWSE** and look for the folder you have created. Then click **UNZIP**. Click **OK** when unzipped successfully. Click **Close** to close the Winzip Self-Extractor window.



- On your PC, click **START** and then **RUN**. Click **BROWSE** and go to the folder you have created. Look for the file **Setup.exe** (or **vpnclient_setup.exe** for Vista version). Select it then click **OPEN**, then **OK**.



- Restart your PC. **Connect to the Internet** via your own ISP.
- Look for a new program “Cisco System VPN Client”. Select **VPN Client**. Then click **Connect**.



- Uncheck** all the proxy checkbox in your IE browser. (Look under “Tools” – “Internet Options” – “Connections” – “LAN Settings”.)

How to use the Remote Dial-in Services via a modem?

- Set your modem to dial **2931-5600**.
- Input your PolyU **NetID** and **NetPassword** as the Username and Password respectively.
- Uncheck** "Use a proxy server" in Internet Explorer. (Look under “Tools” – “Internet Options” – “Connections” – select the session – “Settings”.)

Help

- For problems with installing the VPN client, please call the Information Technology Services Office at **2766-5900** or refer to http://www.polyu.edu.hk/its/services_facilities/polyuvpn/vpnfaq.htm (FAQ).
- For problems with using Library resources, please contact the Library at **2766-7734**.

07/2007

